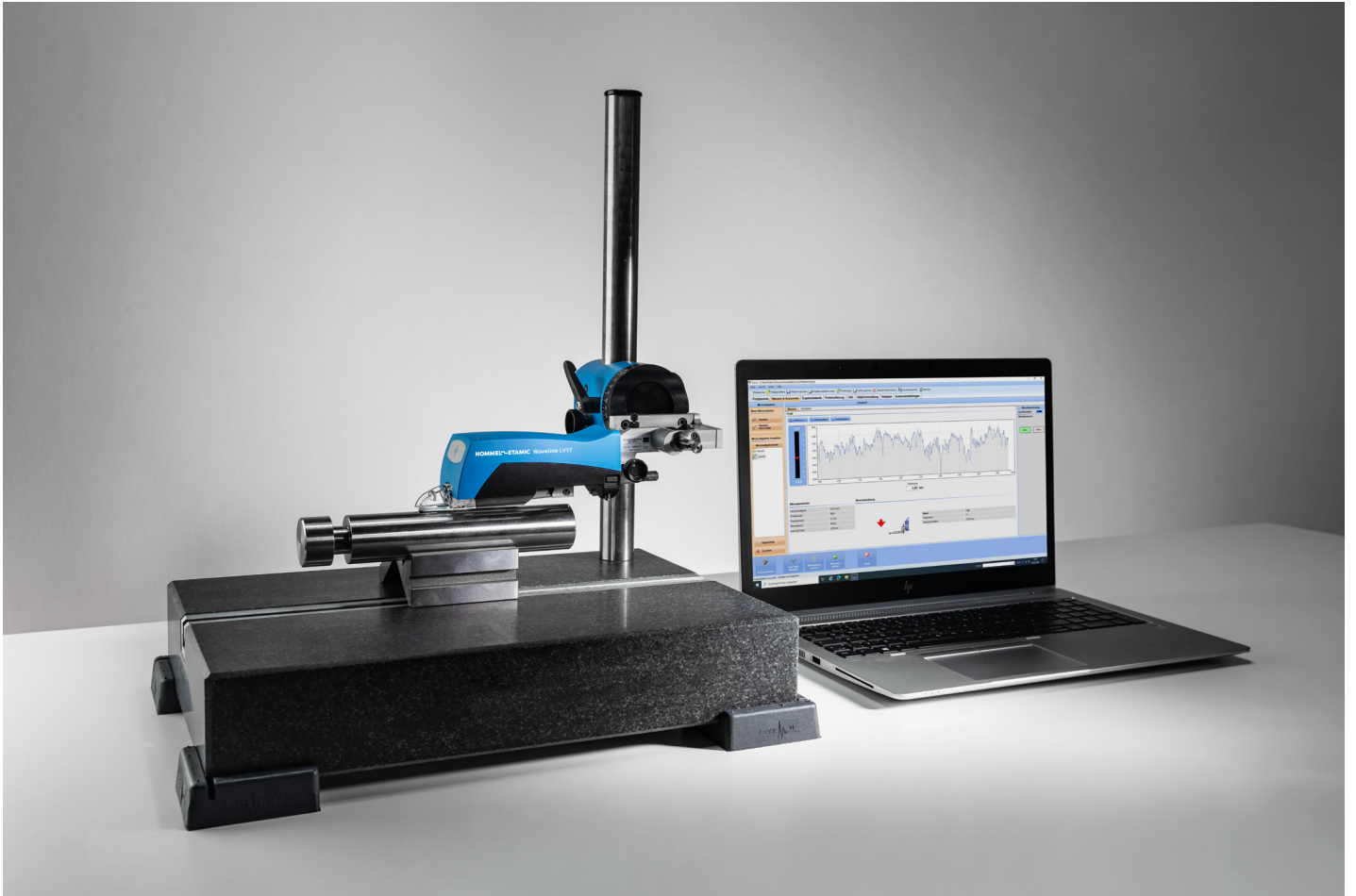


## Waveline W15

# Mobile, wireless roughness measurement for flexible use in production and measuring room



Waveline W15 with optional measuring station MS300, laptop and accessories

### System features

- Handy traverse unit for various measuring tasks
- Integrated start button for one-handed operation
- Optional, compact measuring station, can be used in the measuring room or on the shop floor
- Supports skid probes
- Solves all common roughness measurement tasks
- Measurement in all positions, even overhead
- Various measuring speeds
- PC-based evaluation with Evovis Mobile Standard
- All current standards including the new ISO 21920 series of standards
- Flexible program design and logging
- Export of parameters and profiles, optional statistical interfaces
- Large range of skid probes

## Waveline W15

Modular roughness measurement in every position



Waveline W15 with optional height measuring stand HS300 and monitor



Transverse probing without retooling

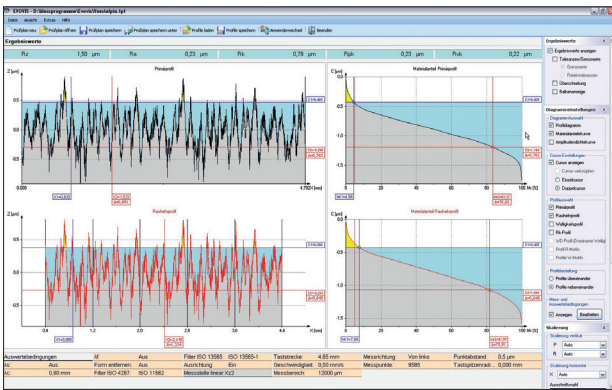
## Technical data

Max. traverse length	17.5 mm
Measurement speed	0.15   0.5   1 mm/s
Interfaces	USB   <b>Bluetooth®</b> Wireless Technology
Measuring range/resolution	T1E probe: $\pm 100 \mu\text{m}/6 \text{ nm}$
Probe connection	T1x probe (6-pin)
Measuring position	Any position, also upwards

## Sets

Art. No.	Description
722900	Traverse unit LV17, software Evovis Mobile Standard, probe T1E KE2/90D, case, tool
728826	Traverse unit LV17, software Evovis Mobile Standard, case, tool

## Evovis Mobile measurement and evaluation software



Interactive profile analysis

The Evovis Mobile measurement and evaluation software offers a standardized user interface for roughness measurement with clearly understandable operating logic and extensive assistance functions for the design of individual measurement applications. It has comprehensive options for documenting measurement results.

- All common surface parameters in accordance with ISO 21920, ISO 4287 and other ISO and national standards
- Integrated help for parameters
- Wizard for selecting measurement conditions
- Individual, free design of logs
- Simple creation and management of templates
- Automatic, electronic archiving of logs